

The GM Care Record

22nd June 2020: Weekly Stakeholder Brief

This briefing provides a weekly update on the progress made in accelerating data sharing across health and care in Greater Manchester and updates on the implementation of the GM Care Record. **More information on the GM Care Record can be found at: www.healthinnovationmanchester.com/gmcarerecord**

Realising the benefits of the GM Care Record

The introduction of the GM Care Record enables significant benefits to GM's health and care organisations through the ability to share patient information to provide more informed patient care.

The introduction of the record continues at pace, helped in part by the information governance arrangements arising from the COVID-19 pandemic. As the roll-out continues, it is crucial that the full benefits are measured, both clinical and non-clinical, and to ensure optimal value for money from the investment.

A dedicated **benefits realisation programme** is now underway to reflect the variety of benefits the record will result in. This may be the results of sharing patient data and developing closer integration of care, through to the impact on the management of patients, and ultimately contributing to better, safer and faster clinical decision making.

This programme will be undertaken across partners including Graphnet, GMHSC Partnership, Health Innovation Manchester and colleagues from the NIHR Applied Research Collaboration at the University of Manchester. The benefits will be measured using a combination of quantitative and qualitative methods, ranging from individual staff interviews or focus groups, and extensive analysis of existing NHS data.

If you have evidence of the benefits of introduction of the GM Care Record, or would like to be involved in this programme, please contact Hadleigh Stollar, Customer Director at Graphnet: hadleigh.stollar@graphnethealth.com.

Usage of the GM Care Record

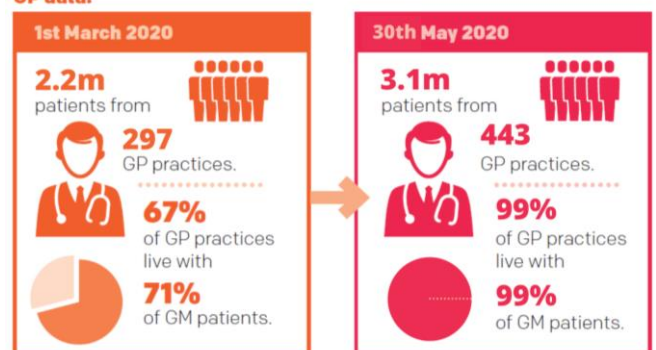
Last week, we were delighted to report that we'd hit over 2,000 patients accessed through the record on a single day (9th June).

This week, we can report that on 17th June, the milestone of over 1,500 health and care users accessing the record on a single day was reached.

The rate at which the number of users and patients accessed through the record is rapidly increasing and we'll keep you updated as further milestones are reached.

Work continues to add data to the GM Care Record to create a combined health and care for our citizens.

GP data:



Thank you once again for your contribution in building, promoting and using the record.

“ The GM Care Record will have a direct impact on the quality and precision of care we are able to provide patients, particularly those with complex needs across multiple specialties.

Sharing this information has never been more important as it will greatly aid clinical decision making and will reduce the burden on both patients and clinicians, freeing up valuable time to care.

Karen James OBE
Chief Executive

Tameside Integrated Care NHS Foundation Trust

GM Care Record Staff Guidance Leaflet and Other Communications Resources



Communications resources to support locality public and staff communications have been updated and shared with GM communications leads (available [here](#)). These resources include the staff guidance leaflet (pictured) and film, social media messages and supporting content, and content for newsletters/websites amongst other items.

Thanks to Tameside & Glossop Council and CCG, Salford Together and CCG, GMHSC Partnership, Bolton CCG and FT, GMCA, and the Christie, amongst others, for sharing public content on social media so far. You can follow the progress of the campaign on Twitter [@GMDigitalHC](#) and [@HealthInnovMCR](#).



Rollout of the Greater Manchester Care Record

Sharing of patient information across organisations in GM

As someone who works in health or social care, easy access to patient information is important to support your decision making, especially in situations such as the COVID-19 pandemic. The GM Care Record can help.

The GM Care Record is an extension of existing integrated digital care records (IDCR) already live in each locality of GM (e.g. Manchester Care Record, Bolton Care Record). However, it collates patient information from across GM into one place, making it easily accessible for health and care workers to inform direct care from across geographies and organisations. It includes vital patient information from primary care, community services, mental health services, social care, secondary care and the specialist services.

The amount of patient information that the GM Care Record holds is increasing all the time. Data feeds are constantly being added so a combined record can be developed for all GM citizens.

If you can't find a particular piece of patient data in the GM Care Record, it might be available elsewhere - **do not assume they have no medical history** and that the patient doesn't have a particular condition or a test result available.

**GREATER
MANCHESTER**
DOING DIGITAL DIFFERENTLY